



Lime Down

Solar Park

Waterbodies in a River Basin Management Plan

September 2025

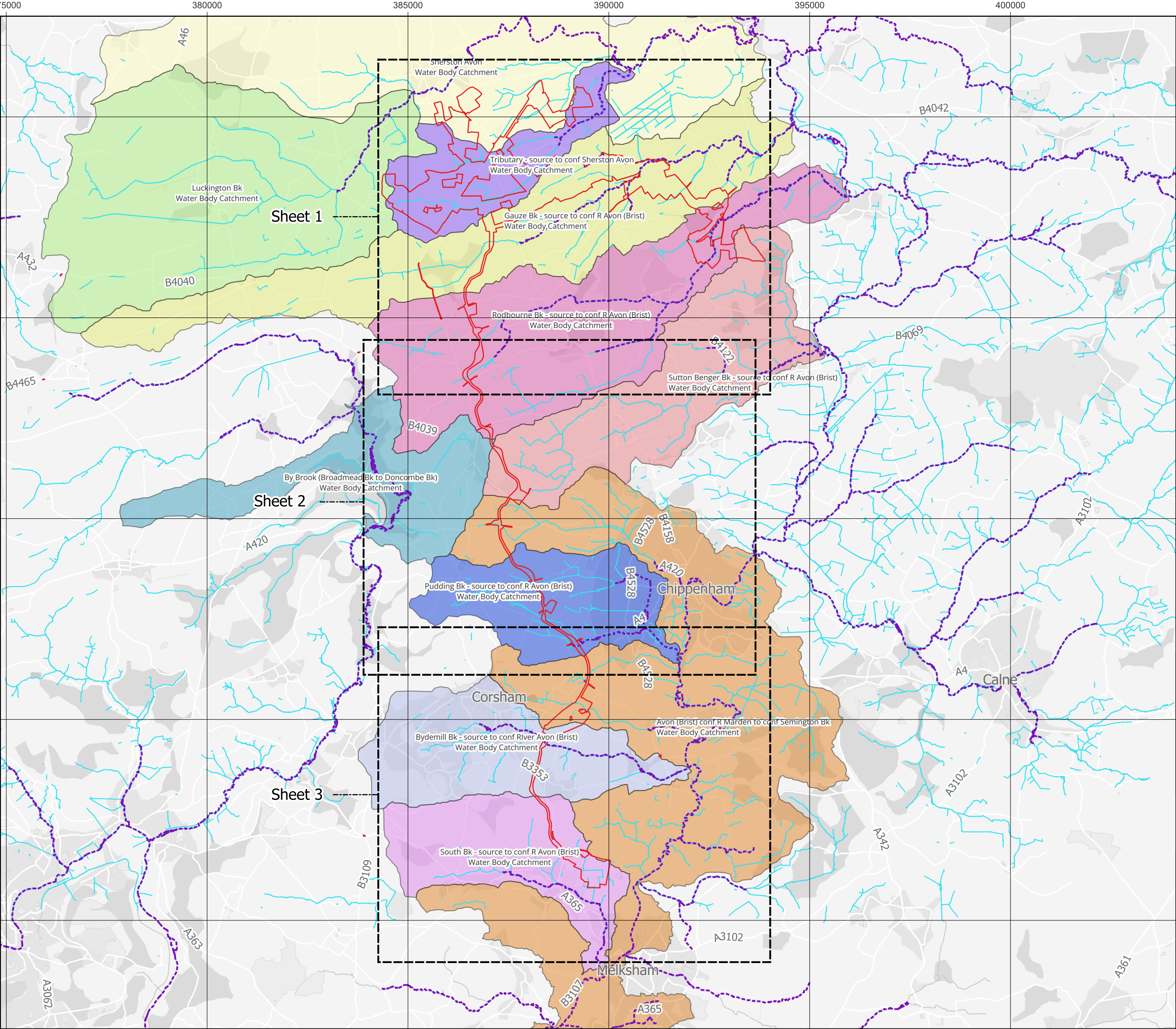
Revision 1


Planning Inspectorate Reference: EN010168

Document Reference: APP/2.8

APFP Regulation 5(2)(I)







Title:
Lime Down Waterbody Catchments

Document:
Volume 2.8
Waterbodies in a River Basin Management Plan
Key Plan

Legend:

Order Limits

EA Main River

Ordinary Watercourse

WFD River Water Body Catchment

Avon (Brist) conf R
Marden to conf Semington Bk

By Brook (Broadmead Bk to Doncombe Bk)

Bydemill Bk - source to
conf River Avon (Brist)

Gauze Bk - source to
conf R Avon (Brist)

Luckington Bk

Pudding Bk - source to
conf R Avon (Brist)

Rodbourne Bk - source to
conf R Avon (Brist)

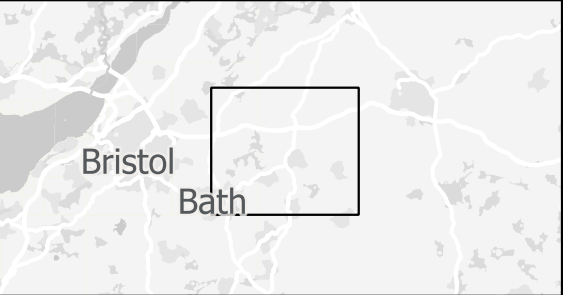
Sherston Avon

South Bk - source to
conf R Avon (Brist)

Sutton Benger Bk - source to
conf R Avon (Brist)



Tributary - source to conf Sherston Avon


Data: Base Maps: © Crown copyright and database rights 2025 Ordnance Survey 0100031673



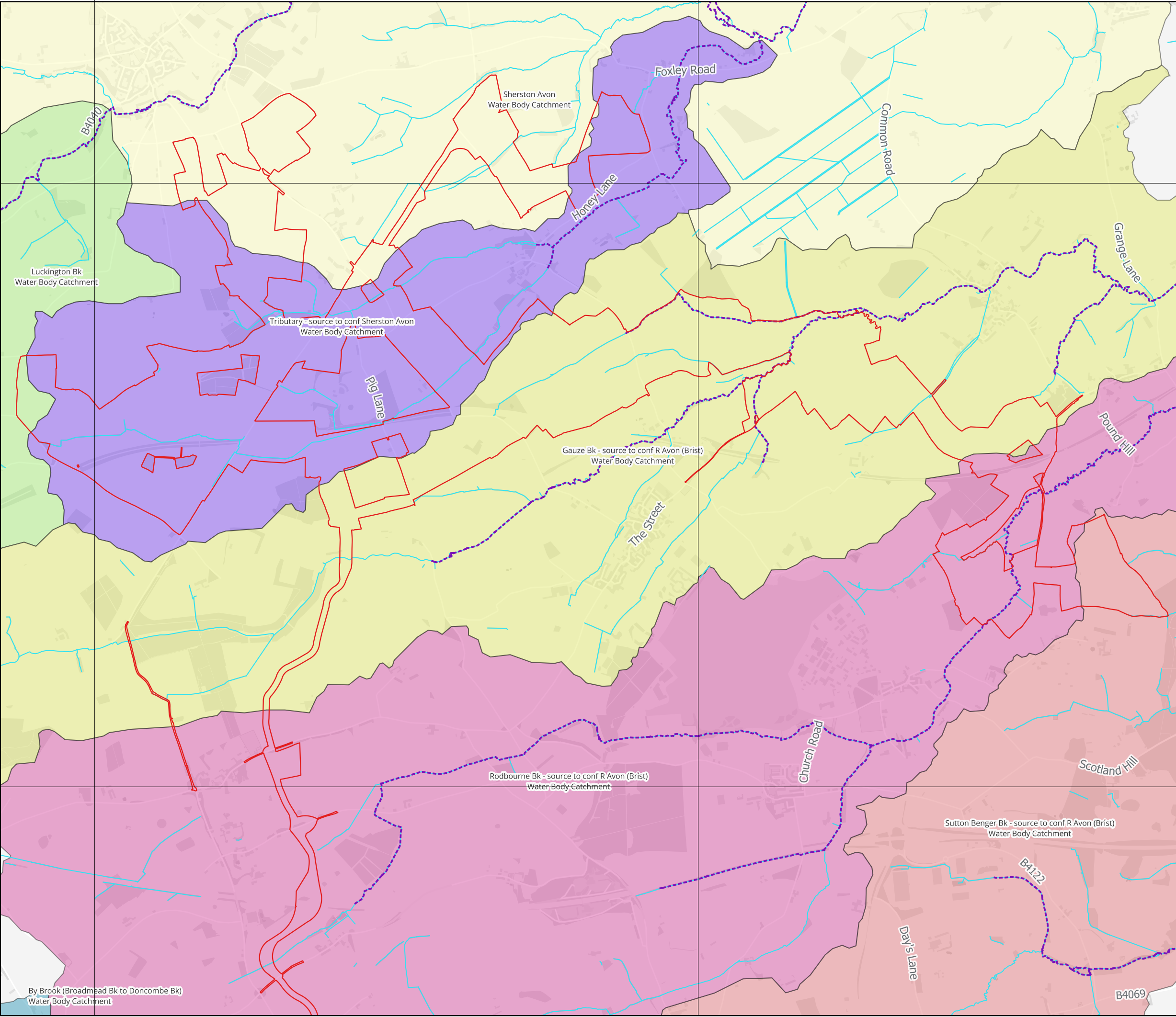
APFP Regulation: 5(2)(l)
Application Doc no.: EN010168/APP/2.8
Drawing no.: 317212/2.8


Co-ordinate system: OSGB36 / British National Grid
Scale: 1:90000 @ A3





024 km





Title:
Lime Down Waterbody Catchments

Document:
Volume 2.8.1
Waterbodies in a River Basin Management Plan
Sheet 1 of 3

Legend:

Order Limits

EA Main River

Ordinary Watercourse

WFD River Water Body Catchment

Avon (Brist) conf R
Marden to conf Semington Bk

By Brook (Broadmead Bk to Doncombe Bk)

Bydemill Bk - source to conf R Avon (Brist)

Gauze Bk - source to conf R Avon (Brist)

Luckington Bk

Pudding Bk - source to conf R Avon (Brist)

Rodbourne Bk - source to conf R Avon (Brist)


Sherston Avon

South Bk - source to conf R Avon (Brist)

Sutton Benger Bk - source to conf R Avon (Brist)

Tributary - source to conf Sherston Avon

Data: Base Maps: © Crown copyright and database rights 2025 Ordnance Survey 0100031673



Bristol
Bath

APFP Regulation: 5(2)(I)
Application Doc no.: EN010168/APP/2.8
Drawing no.: 317212/2.8.1

Co-ordinate system: OSGB36 / British National Grid
Scale: 1:30000 @ A3

